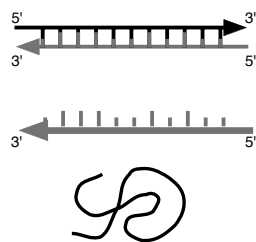


核酸塩基 (BASE)



DNA Genome (遺伝情報)

転写 ↓

mRNA (遺伝情報)

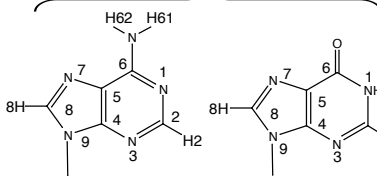
tRNA (アミノ酸運搬)

rRNA (タンパク質合成)

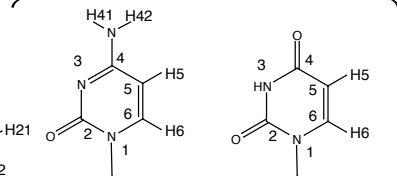
翻訳 ↓

Protein 生理活性

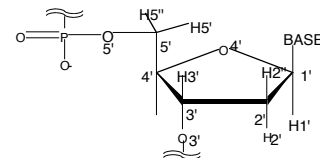
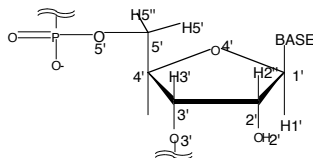
プリン塩基 (purine)



ピリミジン塩基 (pyrimidine)



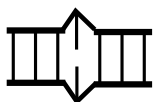
糖 (SUGAR)



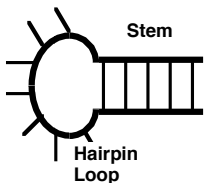
二次構造モチーフ



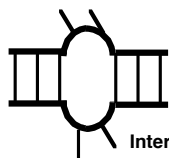
二重らせん構造
Double helix
Duplex



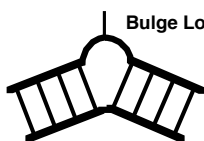
ミスマッチ
Mismatch



ヘアピン(Hairpin)構造
ステム - ループ
(Stem-Loop)構造

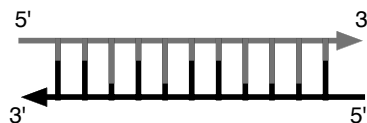


Internal Loop構造



Bulge Loop構造

二重らせん構造
(二次構造)



二重らせん構造 (三次元構造)



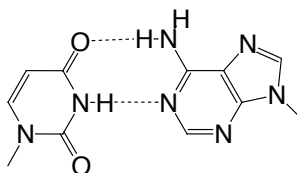
B-form
(DNA)



A-form
(DNA & RNA)

Watson-Crick塩基対

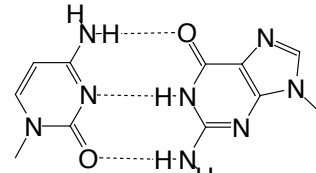
主溝側 (major groove)



副溝側 (minor groove)

U-A塩基対

主溝側 (major groove)



副溝側 (minor groove)

C-G塩基対